



System Guide

NSS® 4 | Zeus® SR

NSX® | Zeus® S

English

Software version: 2.3

Copyright

©2025 Navico Group. All Rights Reserved. Navico Group is a division of Brunswick Corporation.

Trademarks

®Reg. U.S. Pat. & Tm. Off, and ™ common law marks. Visit www.navico.com/intellectual-property to review the global trademark rights and accreditations for Navico Group and other entities.

- Brunswick® is a trademark of Brunswick Corporation.
- Navico® is a trademark of Navico Group.
- B&G® is a trademark of Navico Group.
- Simrad® is a trademark of Kongsberg Maritime AS, licensed to Navico Group.
- CZone® is a trademark of Navico Group.
- C-MAP® is a trademark of Navico Group.
- C-MAP DISCOVER X® is a trademark of Navico Group.
- C-MAP REVEAL X® is a trademark of Navico Group.
- Mercury® and Mercury Marine® are trademarks of Brunswick Corporation.
- NSS® is a trademark of Navico Group.
- NSX® is a trademark of Navico Group.
- Zeus® is a trademark of Navico Group.
- SmartCraft® is a trademark of Brunswick Corporation.
- App Store® and App Store logos are trademarks of Apple Inc.
- ExFAT® is a trademark of Microsoft Corporation.
- FAT® 32 is a trademark of Microsoft Corporation.
- Google Play® and Google Play logos are trademarks of Google LLC.
- NTFS® is a trademark of Microsoft Corporation.
- NMEA® and NMEA 2000® are trademarks of the National Marine Electronics Association.
- QR code® is a trademark of Denso Wave Incorporated.
- SD® and microSD® are trademarks of SD-3C, LLC.
- Wi-Fi® is a trademark of Wi-Fi Alliance.

Warranty

This product's warranty is supplied as a separate document.

Safety, disclaimer and compliance

This product's safety, disclaimer and compliance statements are supplied as a separate document.

Internet usage

Some features in this product use an internet connection to perform data downloads and uploads. Internet usage via a connected mobile/cell phone internet connection or a pay-per-MB type internet connection may require large data usage. Your service provider may charge you based on the amount of data you transfer. If you are unsure, contact your service provider to confirm rates and restrictions.

More information

Document version: 002

This document was prepared using software version 2.3.

Features described in this document may vary from your unit due to connected devices, settings, brand, and continuous software development.

For the latest version of this document in supported languages, and other related documentation, visit www.simrad-yachting.com/downloads or www.bandg.com/downloads.

Contact us

For product support and service information, visit www.simrad-yachting.com/contact-us or www.bandg.com/contact-us.

CONTENTS

5 About

6 Front controls

6 NSS 4 and Zeus SR

7 NSX, Zeus S and Ultrawide

8 Card reader

8 Discover X and Reveal X Charts

9 Turn unit on/off

9 External power control

10 First startup

11 Quick access menu

14 Home screen

15 Activity bar

16 Apps

16 Open apps

16 Close apps

17 Pin apps

17 Unpin apps

18 Custom app groups

19 Controllers

19 Show control bar

20 Open controller

20 Float a controller

21 Mercury Engines controller

22 CZone Digital switching

23 Lenco trim tab controller

24 Device registration

24 Mobile app

25 Alerts

25 Mute an alert

26 View alert messages

27 Manage alert rules

28 Connected devices

28 Configure connected devices

30 Network sharing

31 Simulation

31 Retail mode

31 Simulator source files

31 Advanced simulator settings

32 System settings

37 Maintenance

37 Sun cover

37 Cleaning instructions:

37 Check connectors

38 Update software

38 Service report

38 Backup data

39 Restore factory settings

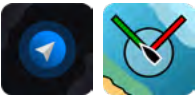
40 Status icons

ABOUT

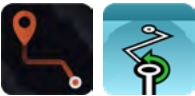
Your Simrad® and B&G multi-function display (MFD) is available in various sizes. This document describes the features of the NSS 4, Zeus SR, NSX, and Zeus S multi-function display units' operating system.

For app-specific features and functions on your MFD, refer to each app's guide via the download links. Download the mobile app or visit: www.simrad-yachting.com/downloads or www.bandg.com/downloads.

Chart



Waypoints & Routes



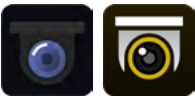
Echo



Instruments



Camera



CZone



Autopilot Controllers



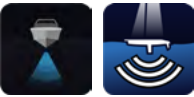
Radar



Tracks



DownScan



Instrument bar



X-Chart Manager



Yamaha



Audio Controller



MOB



Tides



SideScan



Fuel



Mercury

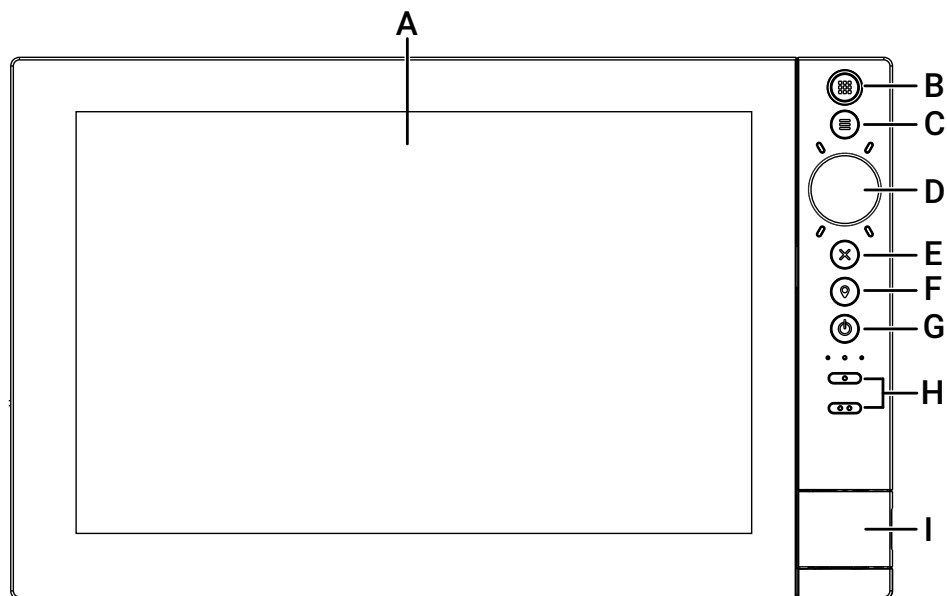


Engines



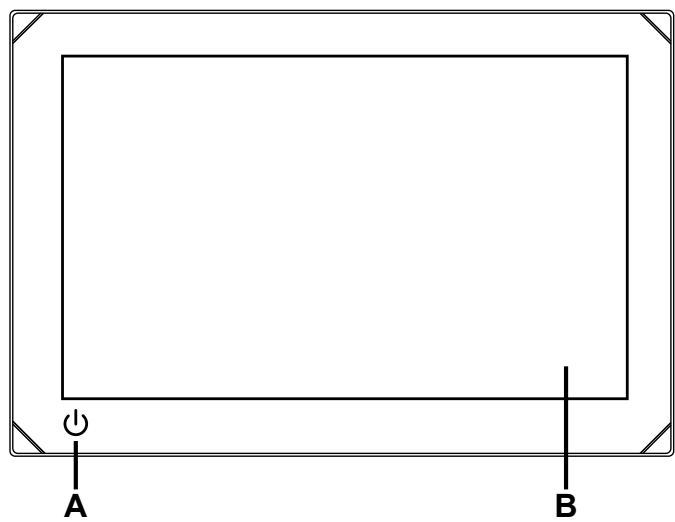
FRONT CONTROLS

NSS 4 and Zeus SR



- A** Touchscreen
- B** Home
- C** App menu
- D** Scroll wheel
- E** Exit
- F** Waypoint
- G** Power
- H** Customizable keys
 - 1x button on the 10" unit
 - 2x buttons on the 12" and 16" units
- I** Memory card door

NSX, Zeus S and Ultrawide



- A** Power button
- B** Touchscreen

CARD READER

A microSD® card can be used to:

- Store detailed charts (Discover X and Reveal X)
- Store or transfer user data (waypoints, routes, tracks, screenshots)
- Update software

→ **Notes:**

- *If a microSD® card and USB storage device are both inserted, by default, data and screenshots are saved to the USB storage device.*
- *Do not download, transfer or copy files to a chart card as it can damage chart information on the card.*
- *MicroSD® cards up to a maximum of 256 GB capacity are supported in FAT® 32, ExFAT® or NTFS® file system.*
- *Always shut the protective cover securely after inserting or removing a microSD® card to keep the slot watertight.*

Discover X and Reveal X Charts

You can purchase and install high resolution Discover X and Reveal X chart data for your display unit.



The charts can be purchased via the **C-MAP X-Chart Manager** as a digital license and stored on the unit's internal memory or via a microSD® card with pre-installed data.

Refer to the **X-Chart Manager App Guide** for details.

→ **Note:** An internet connection is required to access and download chart data.

TURN UNIT ON/OFF

To turn the unit ON, press the power key. A beep indicates it is powering up.

To turn the unit OFF, press and hold the power key. If the key is released before the shut-down is completed, the power off process is canceled.

You can also turn the unit OFF from the quick access menu. Press **Cancel Power Off** before the shut-down is completed to cancel the power off process.

External power control

Power to the unit can be controlled by an external switch or other units. For details about available power options, refer to the **This device** section on page **28** of this guide or the unit's installation manual.

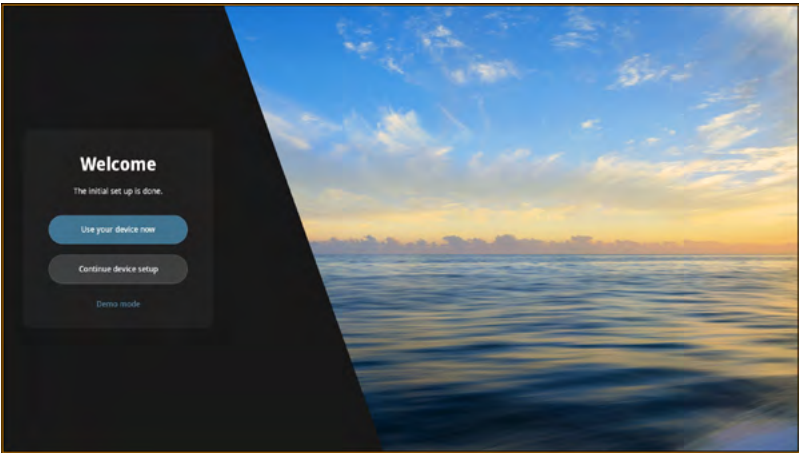
→ **Note:** *If your MFD is controlled by an external power source:*

- *Power Off is not available from the quick access menu.*
- *It can't be powered off using the power key. Instead, pressing and holding the power key puts the unit in standby mode. To wake the unit, press the power key again.*

FIRST STARTUP

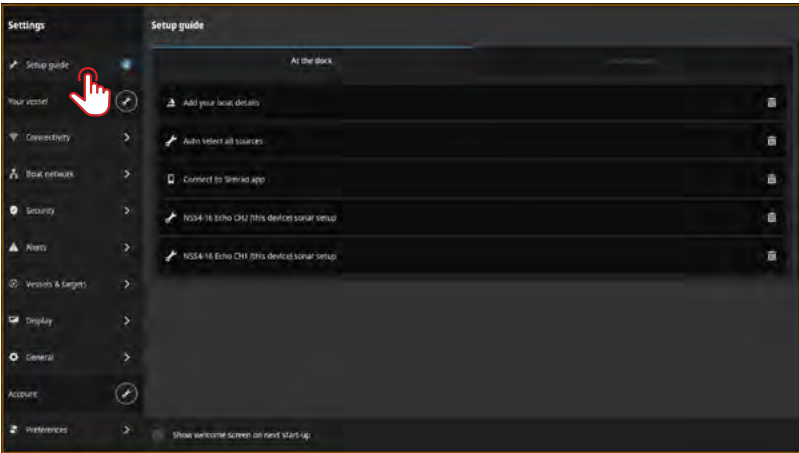
When you start the unit for the first time, or when you start it after a factory reset, you need to complete the initial setup for **Language**, **Country selection**, **Time zone**, and **Boat network**. After that, the **Welcome** screen presents you with two choices:

- Select **Use your device now** to start using the device immediately.
→ *Note: If you select this option, you will continue to receive alert notifications to complete the device setup.*
- Select **Continue device setup** (recommended) to complete the device setup.



From the **At the dock** tab, complete the details as per the on-screen prompts.

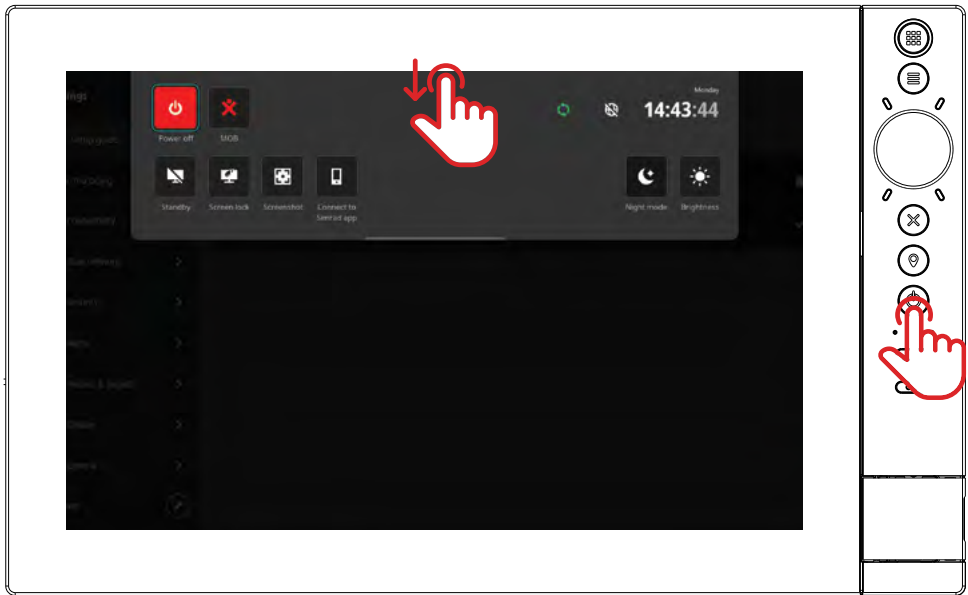
→ *Note: The **On the water** tab is disabled if there are no outstanding configuration tasks.*



→ *Note: All settings configured during the first startup can be changed later.*

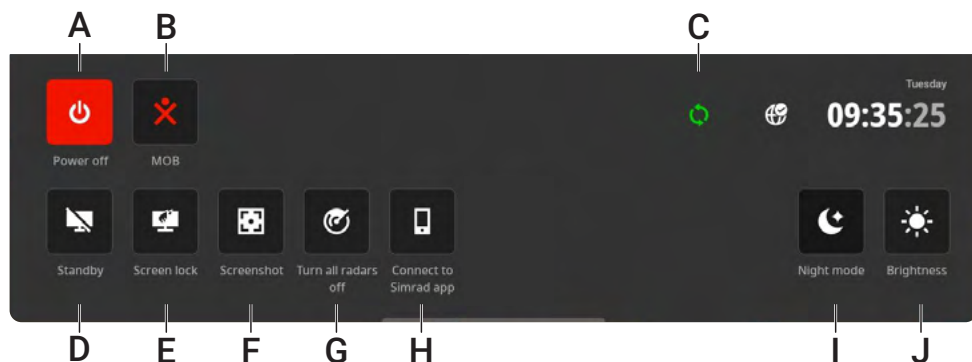
QUICK ACCESS MENU

The quick access menu gives you quick access to basic system settings and features. You can display the quick access menu by swiping down from the top of the screen or pressing the power key.



i The above illustration displays a unit with physical control keys, the touch screen functionality remains the same across devices with this operating system.

→ **Note:** To hide the quick access menu, swipe up, press any key, or tap anywhere on the screen.



A Power off

Select to turn off the device.

→ **Note:** This button will not appear if the unit's power is controlled by a power control bus via the yellow power control wire.

B MOB

Select to create a MOB waypoint at your vessel's location and open the MOB app.

C Sync

Select to synchronize data between your display and the cloud service. Use it to synchronize information like routes, waypoints, tracks etc., created on the mobile app.

→ **Note:** An internet connection is required to synchronize your data with cloud services from the display unit or mobile device.

D Standby

Standby mode helps conserve power when the unit is not in use without completely turning it off. When in standby, the screen turns off while the system and connected devices continue to run.

- Select **Standby** from the quick access menu to enter standby.
- Press the power key to exit standby mode.

E Screen lock

Select **Screen lock** from the quick access menu to lock the touchscreen and prevent accidental operation. Press the power key to unlock the touchscreen.

→ **Note:** The touchscreen automatically unlocks to display alarms or warning alerts even if the touchscreen was previously locked.

F Screenshot

Select **Screenshot** from the quick access menu to capture an image of your screen. Images are stored on a microSD® card or USB storage device inserted into the unit.

→ **Note:** If a microSD® card and USB storage device are both inserted, images are saved to the USB storage device.

G Turn all radars off

Select to turn off all connected radars immediately and place into standby.

→ **Note:** You can turn on the radars from the radar app.

H Connect to mobile app

Select **Connect to app** from the quick access menu to connect your mobile device (phone or tablet) to the unit.

I Night mode


Use **Night mode** to optimizes the color palette and backlight for low light conditions

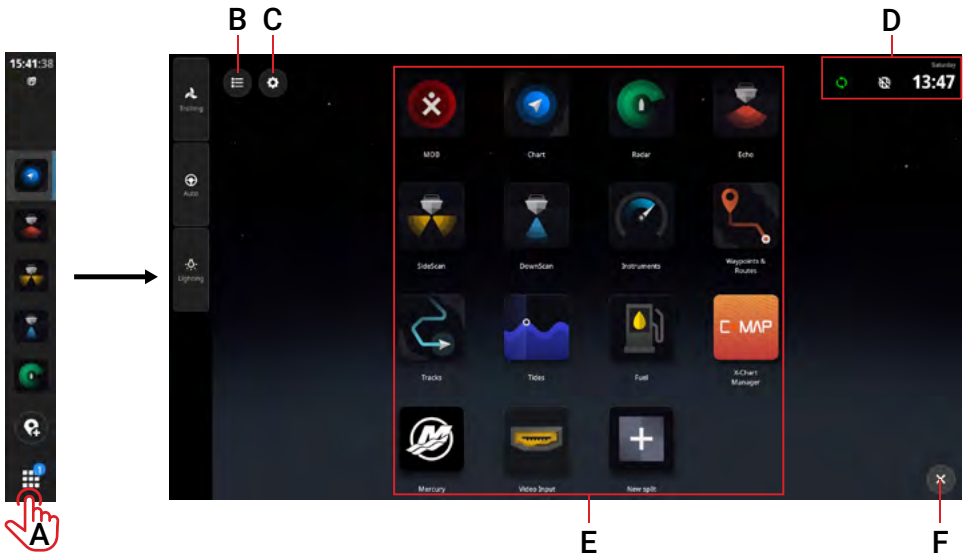
J Brightness

To switch between the display's pre-defined brightness levels, press the power key repeatedly. Alternatively, select **Brightness** from the quick access menu and slide the bar to the desired level.

→ ***Note:** If you dim the brightness so the screen appears black when in brighter environments, the unit may appear to be turned off.*


HOME SCREEN

Select  to open the activity bar, and select it again to access your home screen. You can access all apps, settings, and alert messages from the home screen.



- A Home – select to view the home screen
- B Alerts list – select to view recent and historic system alerts
- C Settings – select to view MFD settings
- D Status bar – displays the current day and time, along with the status of cloud sync, navigation, and internet connection
- E Apps – a grid layout of all system and custom apps
→ **Note:** Application icons vary based on MFD features and connected equipment.
- F Exit – select to exit the home screen and return to the last-used app
→ **Note:** Exit is disabled if there are no active apps.

ACTIVITY BAR

Select  to open the activity bar. When an app is running or pinned, its icon displays on the Activity bar. You can choose to keep the activity bar visible or hidden at all times, to set your preference, navigate to **Settings > Display > Show Activity Bar**.

→ **Note:** The activity bar visibility preferences can be changed on NSS 4 and Zeus SR devices only



- A Status information — Displays the time and status icons
- B Pinned apps display at the top of the panel
- C Divider — A horizontal line separates pinned and unpinned apps
- D Unpinned apps display at the bottom of the panel
- E Active app — A vertical line appears next to the app currently showing on the main display
- F Waypoint button — Creates a waypoint at the vessel's current location and displays a confirmation. Waypoints created this way are visible in the Chart app and Waypoints & Routes app.
- G Home button — When selected, the home screen displays and the button changes to the close/back button. A badge indicates the number of alert messages that need attention.

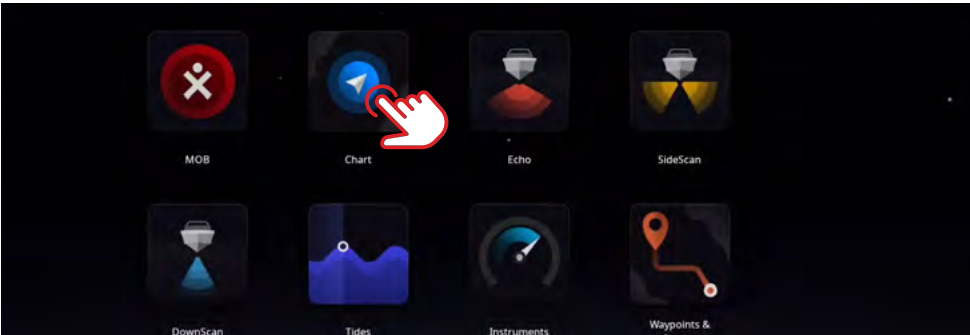
APPS

An app is a program for a unique feature or function. The availability of apps depends on your display unit and connected hardware.

For app-specific user guides, download the mobile app on your mobile device and connect it to your display unit, or visit: www.simrad-yachting.com or www.bandg.com

Open apps

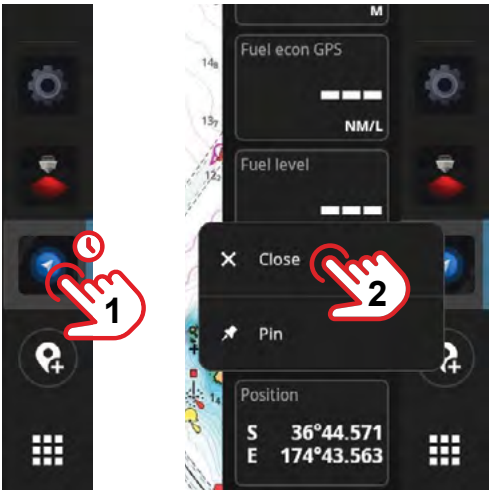
To open an app, select the app icon from your home screen. Alternatively, if the app is pinned or used recently, you can select it from the activity bar.



Close apps

To close an app, select and hold it in the recent apps panel and select **Close**.

When you close an unpinned app, it disappears from the activity bar. If you close a pinned app, it continues to show in the activity bar.



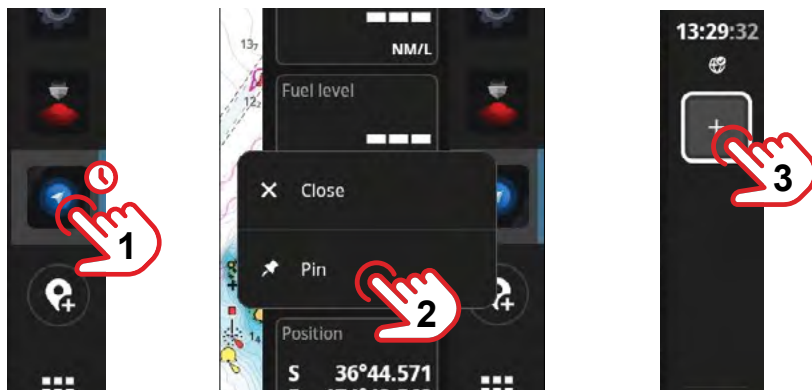
Pin apps

You can pin the apps you use most often to your activity bar. Both individual apps or custom app groups can be pinned to the activity bar.

To pin an app, select and hold it on the activity bar and select **Pin**.

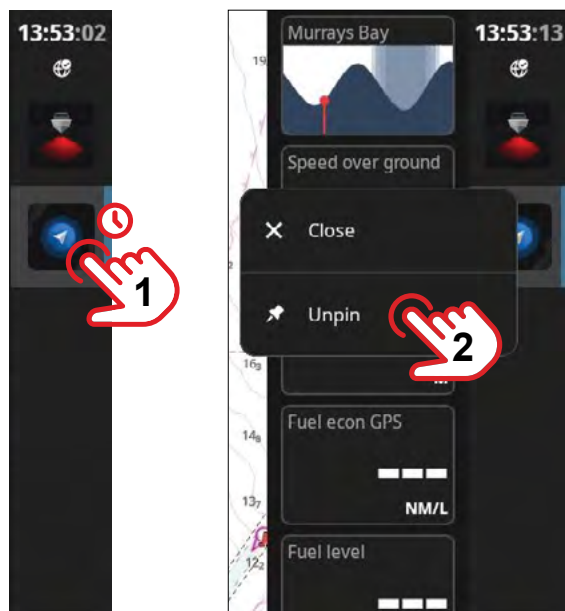
Select a plus button in the activity bar to specify where you want to position the app.

→ **Note:** The app you pin at the top of the activity bar opens by default each time you restart the unit.



Unpin apps

To unpin an app, select and hold it in the activity bar and select **Unpin**.



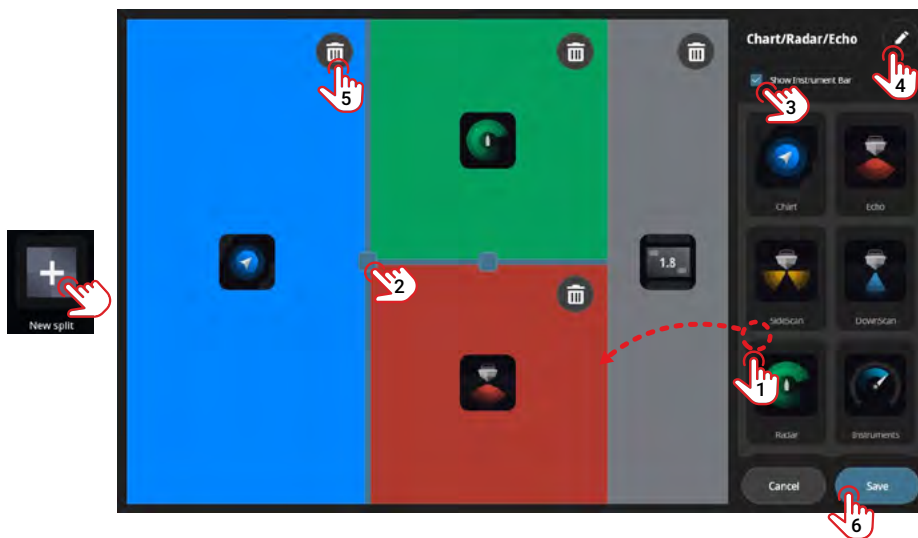
Custom app groups

When you group apps, you can view two or more apps at the same time.

You can view more than one instance of the same app, such as two instances of the Chart app with different zoom levels, separate sonar frequencies, or dual radar ranges.

To create a new app group, select **New split** on the home screen.

- 1 Drag and drop the desired apps onto your new app group.
- 2 Select the square handles and slide between the splits to adjust the size of the app.
- 3 Select the checkbox to show the instrument bar on the right side of the app group.
→ **Note:** *The instrument bar cannot be repositioned.*
- 4 Select the edit icon to give the app group a unique name.
- 5 If necessary, select the trashcan icon to remove an app from the group.
- 6 Select **Save** when you are done, a new icon with your chosen name will display on your home screen.



To edit or delete an app group, select and hold its icon on your home screen or recent apps panel and select **Edit** or **Delete**.

→ **Note:** *Some apps may have limitations when creating an app group, such as only allowing one instance of the app to be added.*

CONTROLLERS

Controllers are vertical panels on your screen that allow you to remotely operate system devices, such as an autopilot or audio server. If these devices are installed, you can access their controllers from your unit's control bar. For detailed information about a controller, refer to its specific guide.

The following controllers are available:

- Audio
- Autopilot
- Trolling motor
- CZone Digital switching
- Lenco trim tabs
- Lighting
- Mercury® engines (cruise and troll functions)
- Suzuki® engines (trim and troll functions)

Show control bar

To show the control bar, swipe in from the left edge of the screen.



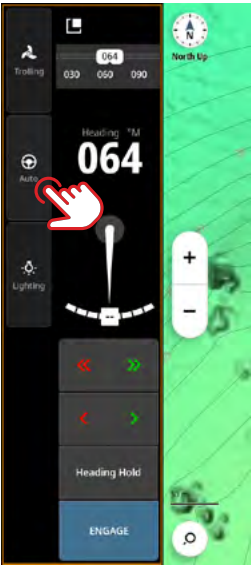
To hide the control bar, swipe out to the left of the screen.

→ **Note:** Hiding the control bar gives you more space to display your apps.

⚠ WARNING: The control bar cannot be hidden if a controller is in use e.g. Autopilot.

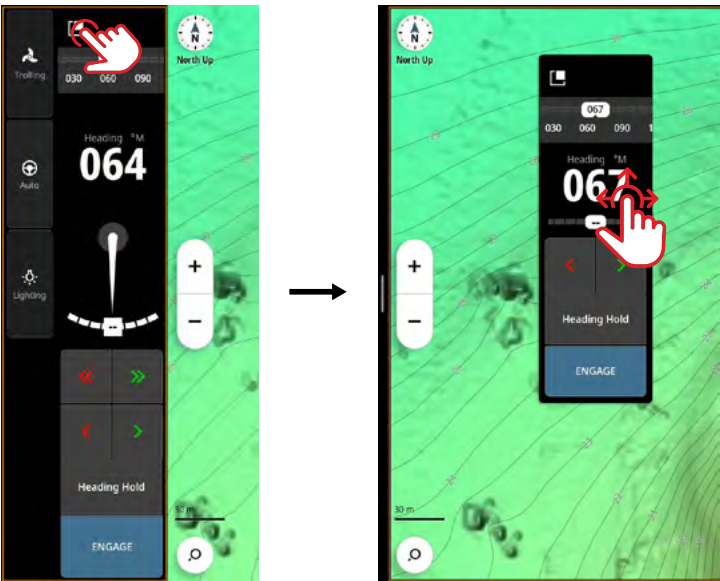
Open controller

To open a controller, select the controller button from the control bar. Re-select the controller button to close it.



Float a controller

To detach a controller from the control bar, select and drag the float icon to your desired location on the screen. Select the float icon again to re-attach the controller to the sidebar.



Mercury Engines controller

The Mercury Engines controller is available when a Mercury SmartCraft® Connect gateway is installed and commissioned on the vessel. Refer to the **Mercury App Guide** for operating instructions.

The following features are supported:

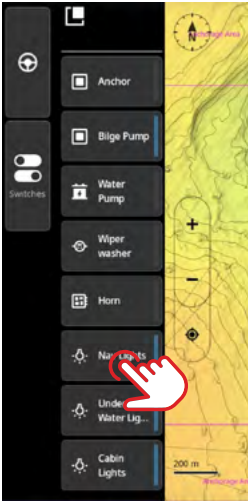
- Cruise control – provides precise control of the engine RPM or speed control
 - Troll control – provides precise low-speed control in 10 RPM increments
- **Note:** Consult your Mercury SmartCraft® Connect installer or refer to the product documentation for further information.



Mercury® SmartCraft® Connect

CZone Digital switching

Controller



The control bar switches appear automatically when a CZone device is commissioned on the NMEA 2000® network.

Select a button to toggle on/off the device.

→ **Note:** Refer to the CZone switch documentation and configuration tool for guidance.

CZone app



The CZone app allows you to control various, lights, pumps, and devices installed on your boat and configured on the CZone system. To display an overview of the boat and general position of the devices, contact your CZone technician

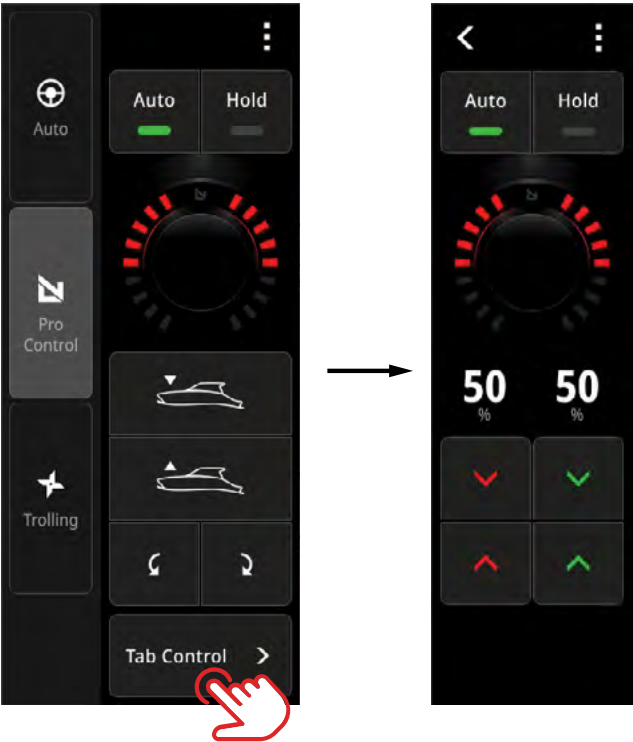


→ **Note:** Refer to the CZone product documentation for further information.

Lenco trim tab controller

The Lenco Pro Control trim tab controller displays when a compatible Lenco Pro Control trim tab system is connected.

The controller mimics the functions and behavior of a physical dash mounted Pro Control Auto Keypad.

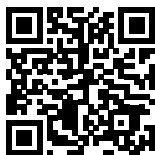


→ **Note:** Refer to the Lenco Pro Control product documentation for further information.

DEVICE REGISTRATION

You can register your display unit before or after installation.

Navigate to www.simrad-yachting.com/mfdreg or www.bandg.com/mfdreg or scan the appropriate QR code® below



Simrad®



B&G

- On the website, select **Register with serial number**, then enter the device's 9 or 10 digit serial number located on a sticker on the bottom of your unit.
- If you have powered ON the display, you can also navigate to **Settings > General > About > Serial number** to see the device serial number.
- Fill out all requested details on the form and select **Register** to complete device registration.

MOBILE APP

Available on the App Store® or Google Play®, you can use the mobile app to:

- Sync waypoints and routes
- Record tracks
- Download and view app guides
- Subscribe to Premium charts
- Create your own waypoints, routes and tracks
- Explore points of interest (POI)
- Download and apply software updates to your display unit

→ **Note:**

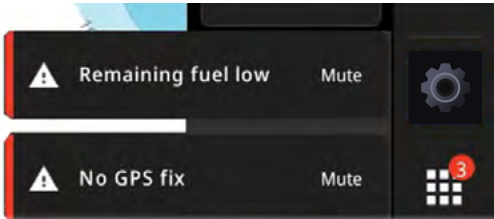
- Tracks and tags are not synchronized.
- An internet connection is required to log in to your Simrad® or B&G account and synchronize your data with cloud services.
- Your internet service provider may charge you to connect to the internet.

ALERTS

The unit continuously monitors connected sensors and devices for alerts, system faults and environmental changes. Alerts can be configured by setting up rules.

When triggered, an alert rule generates one of the following message types:

- **Alarm** — a message that stays on the screen until you mute it. If your system’s siren is on, it is also accompanied by an audible alarm.
- **Warning** — a message that stays on the screen until you mute it.
- **Notification** — a message that stays on the screen for 15 seconds and then automatically disappears, or until you mute it.



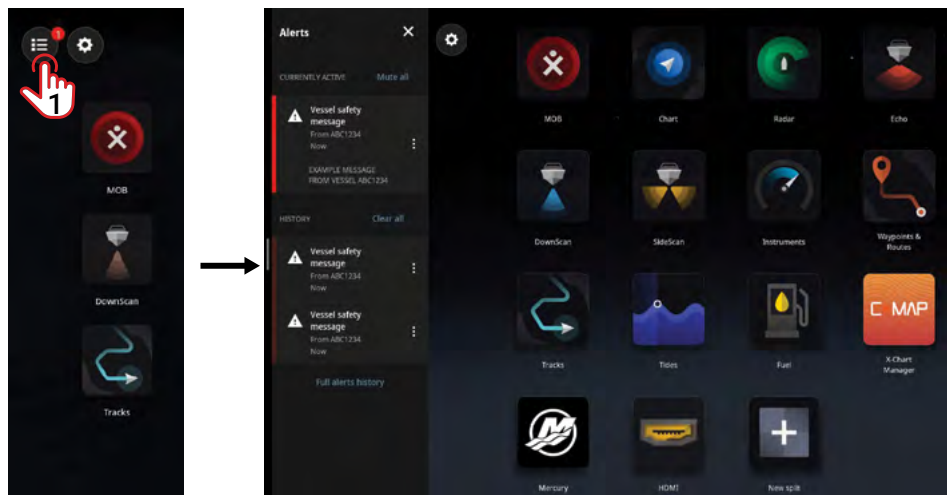
Mute an alert


Select **Mute** or swipe the alert towards the right of the screen to remove an alert. A badge continues to display on the home button until the alert is resolved.

View alert messages

To view a list of all your alert messages, select the **Alerts** button (1) on your home screen.

- The **CURRENTLY ACTIVE** section contains alarms and warnings with unresolved conditions (the conditions that triggered the alerts still exist).
- The **UNREAD** section contains notifications you did not acknowledge (they automatically disappeared after 15 seconds).
- The **HISTORY** section contains alarms and warnings with resolved conditions, and notifications you have acknowledged.



Select  to manage or remove an alert.

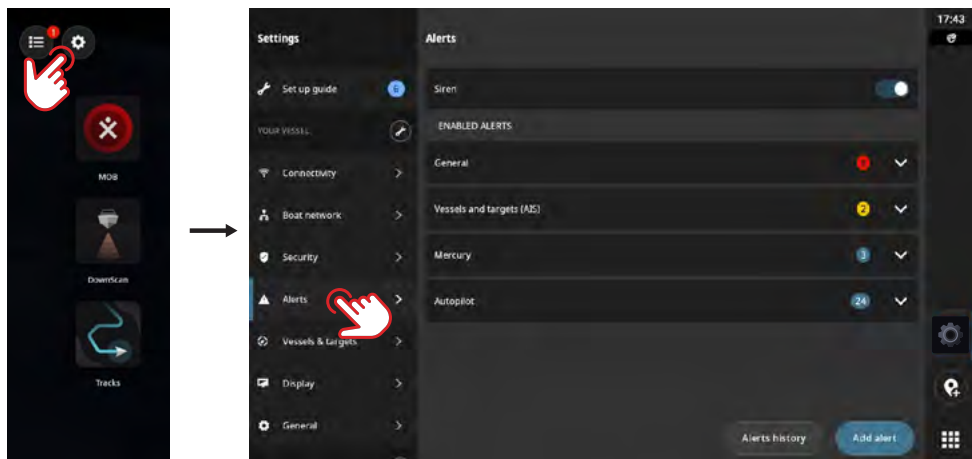
→ **Note:** The alerts list only displays alerts generated since the unit was last turned ON.

Manage alert rules

You can edit and delete default alert rules, or create your own, through the **Settings** menu.

The **Alerts** panel allows you to apply one or more message types (notification, warning or alarm) to each alert and set the value that triggers it.

You can also delete your alerts history and turn on the unit's siren from this panel.



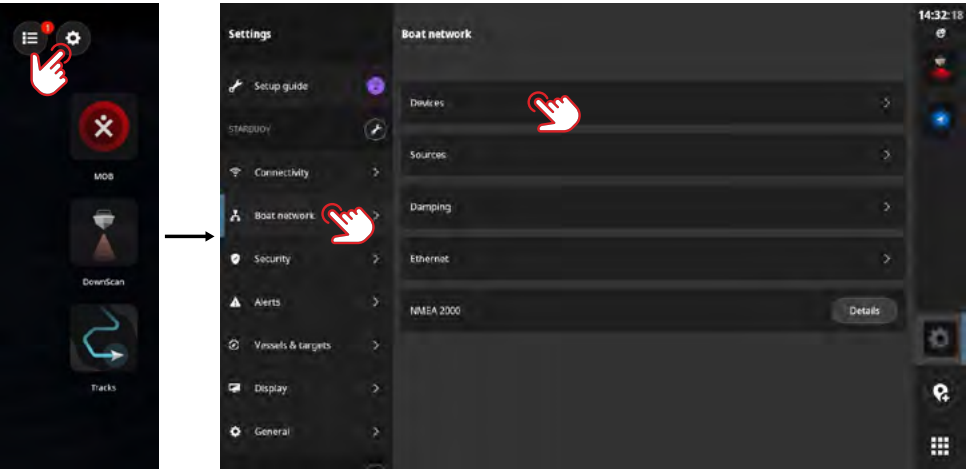
→ Notes:

- Turn on the siren for audible alarm alerts.
- When connected, external alarms will also be audible if an alarm alert is triggered.

CONNECTED DEVICES

Configure connected devices

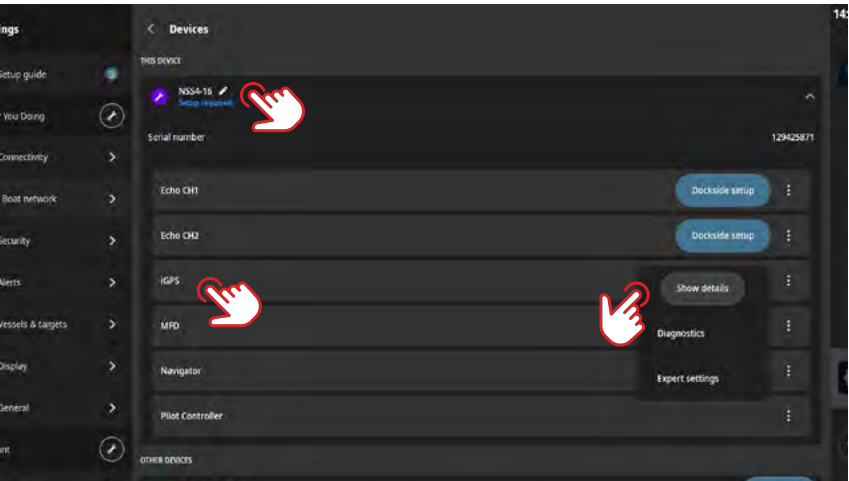
You can configure all internal and external devices and modules from the **Devices** list. You can access setup options, configuration options, and view details. Select the settings button from the home screen, then **Boat network > Devices** to open the list.



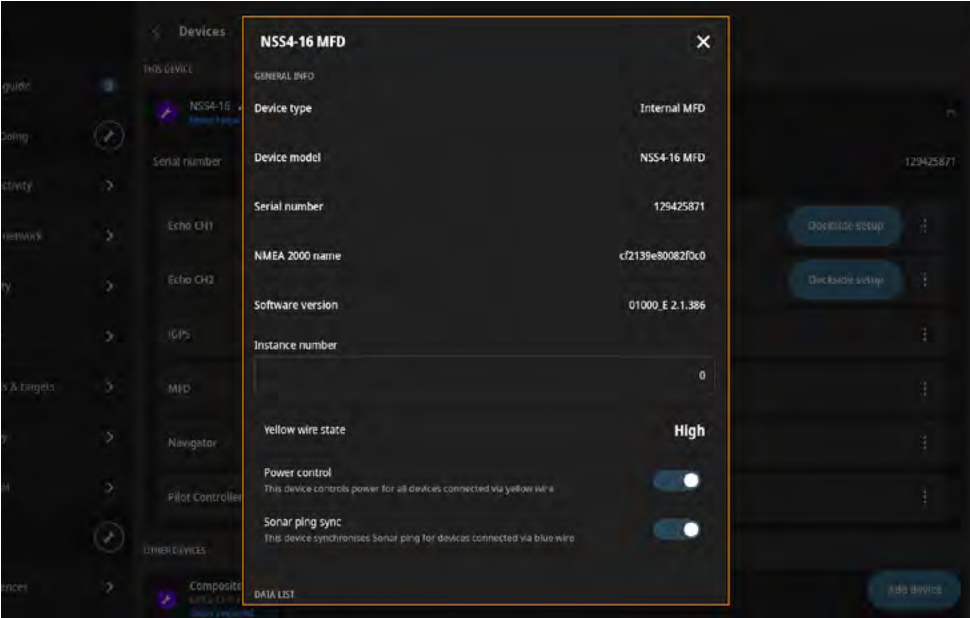
➔ *Note: The configuration options available depend on the connected devices.*

This device

Your unit has several internal devices that can be configured in **This device**. To view your unit's internal GPS antenna details, diagnostics, and expert settings, navigate to: **Settings > This device > iGPS**.



The power cable for your display unit has several functions that are controlled in:
Settings > Devices > This device > MFD.



Power control


The yellow wire in the power cable controls how the unit is turned ON and OFF.

If a unit is set to **Power control** ON and is turned on using the power key, it sends voltage through the power bus. This powers on all other units, regardless of their **Power control** setting.

If a unit is set to **Power control** OFF, it cannot be powered down using its own power key while a unit with **Power control** ON is powered ON. Pressing the power key will set the unit to standby. When all units with **Power control** ON are powered OFF, satellite units can be turned ON and OFF using their own power key. This will not turn ON any other units.

- **Note:** NSX and Zeus S devices can be set as secondary devices only.
- **Note:** For more information, refer to the unit's installation manual.

Sonar ping sync

 This functionality applies only to NSS 4 with sonar.

The blue wire in the power cable can be used in one of two ways. The blue wire can either synchronize the sonar between devices with transducers attached, or it can enable an external buzzer or siren when an audible alert is triggered.

Turn **Sonar ping sync** ON to use the blue wire signal to synchronize the transducer attached to your unit with other sonar devices.

Turn **Sonar ping sync** OFF to enable an external buzzer or siren with the blue wire signal when an audible alert is triggered. Audible alerts must also be turned ON at:

Settings > Alerts > Siren.

- **Note:** For more information, refer to the unit's installation manual.

NETWORK SHARING

Your unit has either:

- A yellow 5-Pin 10/100 Ethernet port
- A yellow 5-Pin 10/100 Ethernet port and an X-coded M12 Gigabit Ethernet (GbE)

The X-coded M12 Gigabit Ethernet (GbE) connector enables high bandwidth applications and advanced sensors and devices. The GbE connector is compatible with yellow Ethernet devices via an optional adapter, but the GbE connector will transmit data at a lower rate.

Both Ethernet connectors share echosounder, radar, and chart app data between units. Refer to the respective app guides for details.

→ **Note:** Use only one X-Coded M12 GbE to yellow 5-pin Ethernet adapter when connecting devices.



SIMULATION

The simulation feature lets you see how the unit works without being connected to sensors or other devices. Select the settings button from the home screen, then **General > Simulation**.

Retail mode

In this mode a retail demonstration for the selected region is shown. If you operate the unit when retail mode is running, the demonstration pauses. After a time-out period, retail mode resumes.

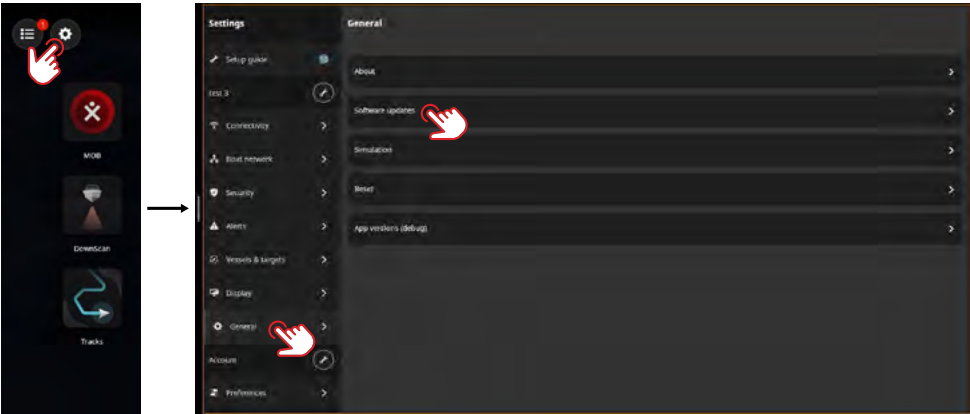
→ *Note: Retail mode is designed for retail/showroom demonstrations.*

Simulator source files

You can select which data files that are used by the simulator. It can be either pre-recorded data files included in your device, your own recorded log files, or log files on a mass storage device connected to the unit.

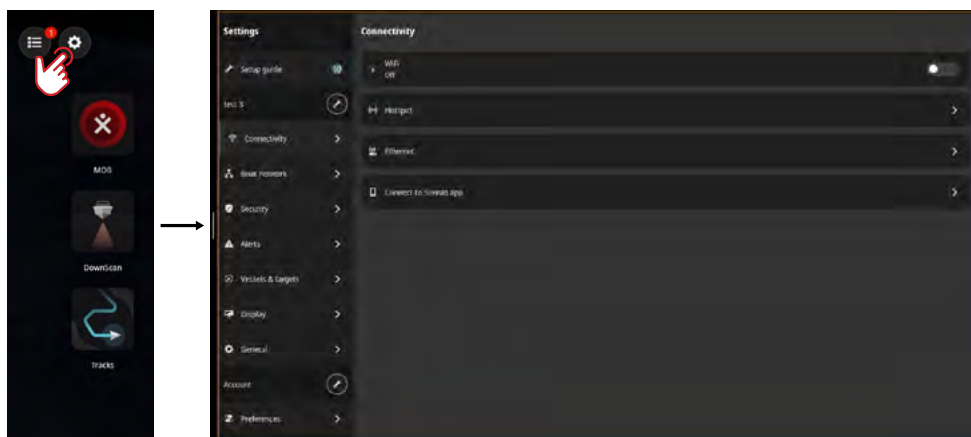
Advanced simulator settings

The advanced simulator settings allows for manually controlling the simulator.



SYSTEM SETTINGS

On the **Settings** screen, you can manage system settings and settings for connected devices.



Your vessel (the vessel's name)

Use to adjust vessel-specific settings. Most of the settings for your vessel were configured the first time the device was started.

→ **Note:** The unit shows 'Your vessel' by default but changes as soon as you give your vessel a **Boat name**.

Connectivity

Use to connect the unit to a Wi-Fi® network, create a hotspot, manage Ethernet connection settings, or connect to the mobile app.

→ **Note:** Some marinas may require you to login to use to access Wi-Fi® internet connections. This connection method is not supported by the unit. We recommend you install the mobile app on your mobile device to download and install updates to your unit.

Hotspot

This display unit can simultaneously connect to the internet and be a hotspot for Wi-Fi® connections; for example, to connect another mobile device to the unit.

→ **Note:** Turn on the display unit's hotspot to connect directly to the Simrad® or B&G mobile app on your mobile device.

Boat network

Use to manage connected devices.

Devices

Lists all internal and external devices and modules. You can access setup options, configuration options and view details from the list.

Refer to the **Connected devices** section on page 28 of this guide.

Sources

Lists selected sources for various types of data. The system can perform an automatic source selection, or you can manually select sources.

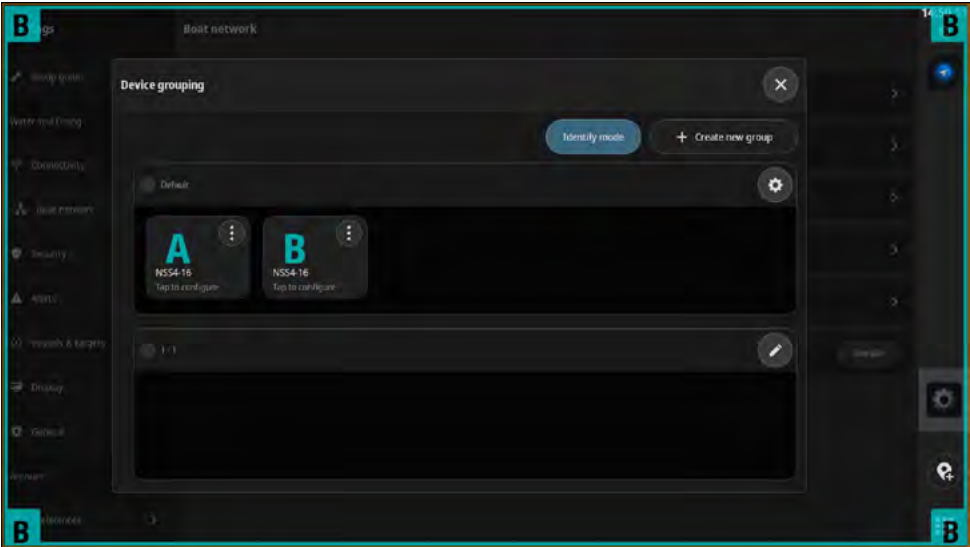
Damping

If data appears erratic or too sensitive, apply damping to stabilize the data.

→ **Note:** *Damping settings only affect the data on the unit where you apply them.*

Device grouping

Devices on the same NMEA 2000® network can be grouped to share the brightness and night mode controls. All displays belong to the **Default** group by default, and you can create separate groups with independent controls.



NMEA 2000®

Provides NMEA 2000® bus information that can assist in troubleshooting.

Security

Set a 4-digit PIN to prevent unauthorized access to your unit. You will need to set up a Simrad® account to set up a PIN.

You will be asked to enter your PIN when you turn on the unit or when you want to use the unit again after placing it on standby.

→ **Note:** *If you forget your display unit's PIN, use your Simrad® or B&G account login details to unlock it. An internet connection is required.*

Alerts

Use to add, edit and delete alerts. For more information, refer to the **Alerts** section on page 25 of this guide.

Vessels & targets

Use to manage settings that affect both AIS and radar targets.

Display

Use to manage additional display settings.

Display size

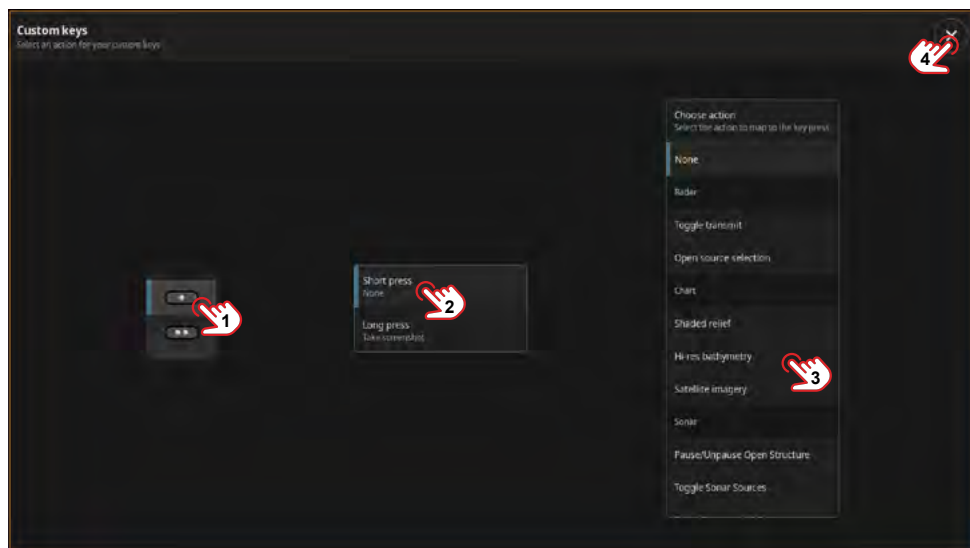
Adjust the interface scale to enlarge menus and text on your display unit.

Default theme

Change your unit's interface between a light or dark color theme.

Custom keys

i This functionality applies to NSS 4 and Zeus SR only.



The above settings screen is displayed when you first press the custom keys after the initial setup.


If you want to change the custom key functions later, navigate to **Settings > Display > Custom keys** to configure the key functions.

Set the custom key's short and long press actions.

- A** Select a custom key (1)
- B** Select **Short press** (2) or **Long press**
- C** Choose an action from the list (3)
- D** Repeat for the other keys
- E** Exit and save (4)

→ **Note:** Available actions may change.

Show activity bar

 This functionality applies to NSS 4 and Zeus SR only

Use to keep the activity bar on screen at all times.

Keypad and touch beeps

Select the volume of the audible beep when interacting with the keypad or touch screen. The default is **Normal**. You can change the volume to **OFF**, **Quiet**, **Normal** or **Loud**.

General

Provides information about your display unit, system updates, device reset, and more.

Account

Use to manage your Simrad® or B&G account, backups, and more.

Preferences

Use to manage language and country, date and time, navigation, and units of measure preferences.

→ **Note:** *It is important to keep your country setting up to date when traveling between countries.*

MAINTENANCE

To ensure optimal performance and longevity of your MFD, follow these care and maintenance guidelines to help extend the service life of the display.

Sun cover

Your MFD comes with a sun cover included in the box.

Whenever the unit is not in use, fit the sun cover to shield the display from direct sunlight and natural elements. This helps extend the service life of the display.

Cleaning instructions:

Your unit's display is treated with high-quality anti-reflective and anti-fingerprint coatings. With regular, gentle cleaning, you can maintain its clarity and durability.

- Avoid rubbing crystallized salt, sand, or dirt directly, as this can scratch the coatings.
- Use a soft microfiber or cotton cloth to clean the screen.
- Lightly spray with fresh water to dissolve salt residue before wiping dry with a microfiber or soft cotton cloth.
- Gently wipe the screen dry — do not apply pressure.
- To clean the housing, use warm water with a small amount of mild dish soap. Wipe dry with a soft cotton cloth.

→ Note:

- Do not use abrasive cleaning products or products containing solvents (acetone, mineral turpentine, etc.), acid, ammonia, or alcohol as they can damage the display's optical coating and plastic housing.
- Do not apply grease, wax, or protective chemicals to the unit or connectors. These can degrade the materials and compromise performance.
- Do not use a jet or high pressure wash

Check connectors

Push the connector plugs into the connector. If the connector plugs are equipped with a lock or a position key, ensure that it is in the correct position.

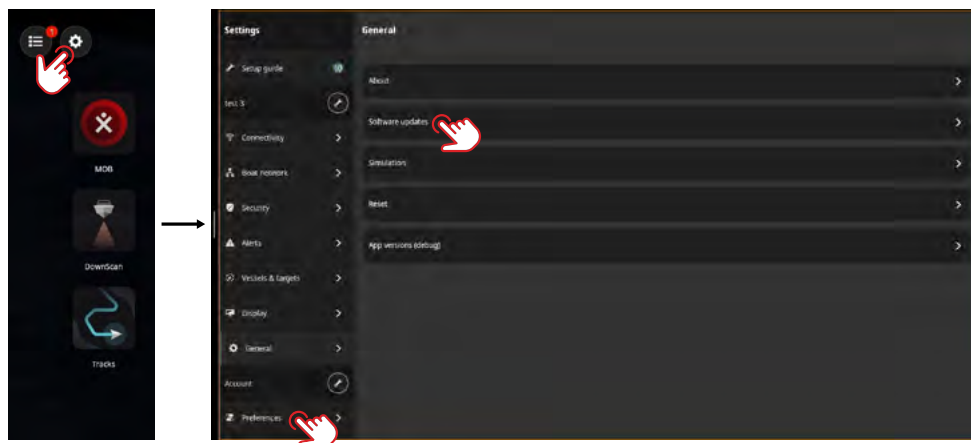
Update software

Your unit will automatically check for software updates for itself and connected devices when it's connected to the internet.

We recommend you register your device and install the Simrad® mobile app onto your mobile device. You can update the unit's software using the mobile app too.

Alternatively, you can download software updates from the Simrad® website onto a USB storage device or microSD® card and manually update the software.

When you insert a microSD® card (or USB storage device) with a newer software version, the unit automatically moves it to the right location and prompts for your permission to update.



Service report

The system has a built-in service assistant that can create a report about the unit to assist in technical support enquiries. Select the settings button from the home screen, then **General > About > Create service report**

The report includes your unit's software version, serial number, and information from the settings file. It can also include information about devices connected to the network. You can also attach screenshots and log files. If you have already contacted technical support, you can add the incident number to assist with tracking.

→ **Note:** There is a 20MB limit for the report attachments.

The report can be saved to a storage device and emailed to support. You can also upload it directly if you have an internet connection..

Backup data

Waypoints, routes, and tracks data can be saved onto a microSD® card or USB storage device as a backup or to transfer data onto another unit. Refer to the **Waypoints & Routes** or **Tracks** app guide for instructions on data export.

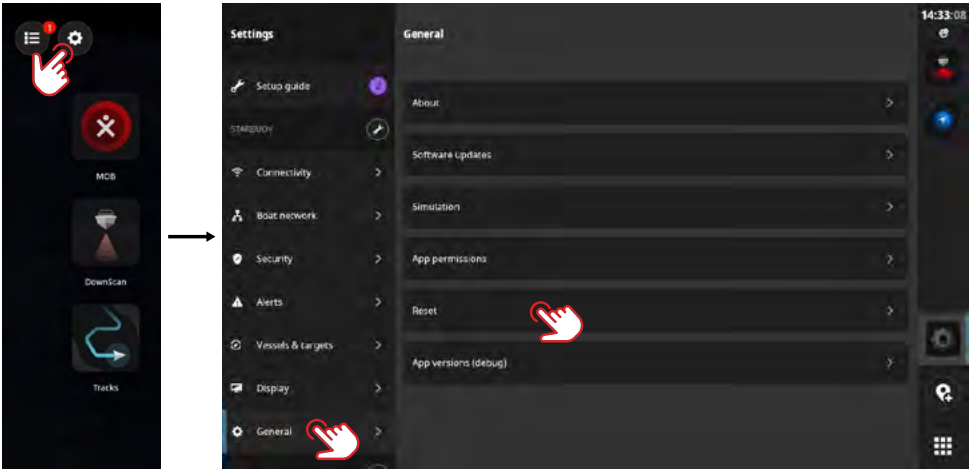
Supported file format

Backup data is created in the .USR, .GPX, and .NEON file formats. These files contain information such as waypoints, routes, and tracks, and are used for backups or to transfer data between devices.

This unit supports the export and import of v6 .USR files.

Restore factory settings













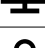




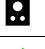
Use the **Reset** option to restore your display unit to the factory default settings.



→ **Note:** All personalized settings and content are deleted, including waypoints, routes and tracks.

STATUS ICONS

Status icons show on your home screen or at the top of your recent apps panel when an app is open.

Icon	Description	
	Wi-Fi® signal strength	
	Wi-Fi® signal error	
	Wi-Fi® disconnected	
	Internet connected	
	Internet connection error	
	No internet	
	Connection to internet	
	Navigation indicator	Shows when actively navigating towards a waypoint or along a route.
	Mobile device disconnected	Shows only if the phone is expected to be connected
	Bluetooth® connected	Shows if a Bluetooth® device is connected
	Sound off	Shows if an audio device is connected and the sound is off
	Water mode	Shows if the screen is less responsive due to water on the display
	Screen locked	Shows if the screen has been locked via the quick access menu
	Check oil	Shows when connected to a suitable sensor / engine interface.
	Fuel low	
	Radar transmitting	
	Remote controller	The MFD is controlled by a remote controller
	Synchronizing	Synchronizing waypoints, routes and tracks

